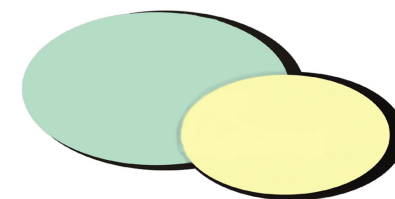


# IVM – Invasive Vegetation Management Information Sheet



[www.i-v-m.co.uk](http://www.i-v-m.co.uk)

Himalayan Balsam (*Impatiens glandulifera*)

Himalayan balsam is an introduced annual, it prefers moist soils but will grow anywhere.

Commonly found adjacent to watercourses, this very fast growing annual plant has the potential to grow to 2.5m tall in 3 months.

It grows rapidly, spreads easily, out-competes other vegetation and readily colonises new areas.

The plant flowers from June to October. It is pollinated by bumble-bees. Seeds are set from August to October. There are 4-16 seeds per pod and each plant can produce 800 seeds.



#### Leaves:

The shade of the serrated leaves vary at different times of the year, from dark green in summer to a much paler green in spring.

#### Flowers:

Attractive, almost dome-like flowers which range in colour from dark pink to light purple.

#### Stems:

Light green in colour, the hollow stems can reach a height of 3m. In perfect conditions, the base of the stem fades to red in colour with the root system visible above ground level.

It has an advanced method of seed dispersal – when the seed pods are touched, they can explode, throwing the seeds up to 1.5m from the plant.

[www.i-v-m.co.uk](http://www.i-v-m.co.uk)

Cambridge Office: 118 Greenhaze Lane, Great Cambourne, Cambridge. 01954 710853 / [patrick@i-v-m.co.uk](mailto:patrick@i-v-m.co.uk)  
Midlands Office: Hill Top, 11 Ley Rise, Sedgley, West Midlands. 01902 650094 / [kevin@i-v-m.co.uk](mailto:kevin@i-v-m.co.uk)

This document acts as an informative guide to the identification of Himalayan Balsam, as with any vegetation, appearance can vary from one plant to the next, please contact IVM if confirmation is required.