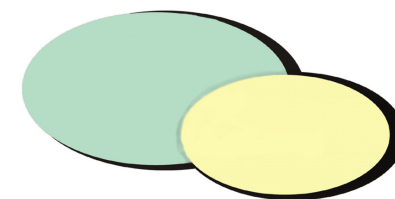


IVM – Invasive Vegetation Management Information Sheet



www.i-v-m.co.uk

Japanese Knotweed (*Fallopia japonica* var. *Japonica*)



Spring:

Young red purple asparagus like shoots turning green as they age, some plants leaf initially but can grow 50cm as straight rod.



Summer:

Bamboo like hollow stems, with regular swollen often red, joints, nodes. Stems up to 3m in height. Leaves are lush green and can be described as heart shaped.



Autumn:

Flowers bloom 80mm-120mm long clusters of small green white flowers. In late autumn flowers start to fall.



Winter:

Stems turn brittle and brown, leaves turn brown/yellow and eventually fall off this usually starts to occur during first frost.

www.i-v-m.co.uk

Cambridge Office: 118 Greenhaze Lane, Great Cambourne, Cambridge. 01954 710853 / patrick@i-v-m.co.uk
Midlands Office: Hill Top, 11 Ley Rise, Sedgley, West Midlands. 01902 650094 / kevin@i-v-m.co.uk

This document acts as an informative guide to the identification of Japanese knotweed, as with any vegetation, appearance can vary from one plant to the next, please contact IVM if confirmation is required.