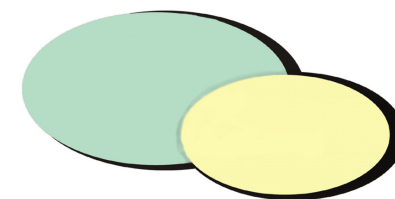


# IVM – Invasive Vegetation Management Information Sheet



[www.i-v-m.co.uk](http://www.i-v-m.co.uk)

Giant Hogweed (*Heracleum mantegazzianum*)

## Spring:

Shoots start to appear and small green leaves with serrated edges, rosette like in appearance.

## Summer/early autumn:

White flowers are produced on large stems up to 6m high with a diameter of up to 20cm.

## Late autumn/winter:

The leaves turn brown, the flowers die and the stems also become brown and brittle.

Giant hogweed out-competes other vegetation due to its size and forms pure stands that expand from year to year if not controlled.



## Leaves:

Extremely large leaves with serrated edges, growing up to 1.5m long and 3m across.

## Stems:

Similar to Cow's Parsley, but much larger, stems can measure up to 12cm in diameter, with reddish-purple spots and small bristles.

## Flowers:

Small clusters or round white flowers, which can measure up to 1m in diameter.

## Health & Safety:

Giant Hogweed is proscribed under the Countryside and Wildlife Act (1981) & requires Duty of Care under the Environmental Protection Act (1990) due to both its invasive and toxic nature. The sap of the plant contains harmful toxins that cause photo-dermatitis and can cause blindness. The effects may not become apparent for up to 48 hours after contact with the sap.

[www.i-v-m.co.uk](http://www.i-v-m.co.uk)

Cambridge Office: 118 Greenhaze Lane, Great Cambourne, Cambridge. 01954 710853 / [patrick@i-v-m.co.uk](mailto:patrick@i-v-m.co.uk)  
Midlands Office: Hill Top, 11 Ley Rise, Sedgley, West Midlands. 01902 650094 / [kevin@i-v-m.co.uk](mailto:kevin@i-v-m.co.uk)

This document acts as an informative guide to the identification of Giant Hogweed, as with any vegetation, appearance can vary from one plant to the next, please contact IVM if confirmation is required.